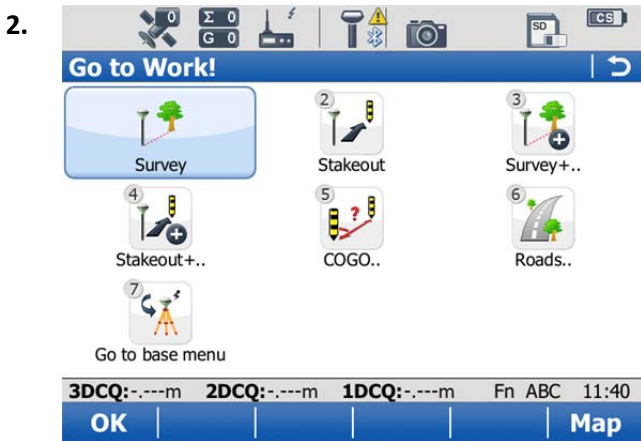


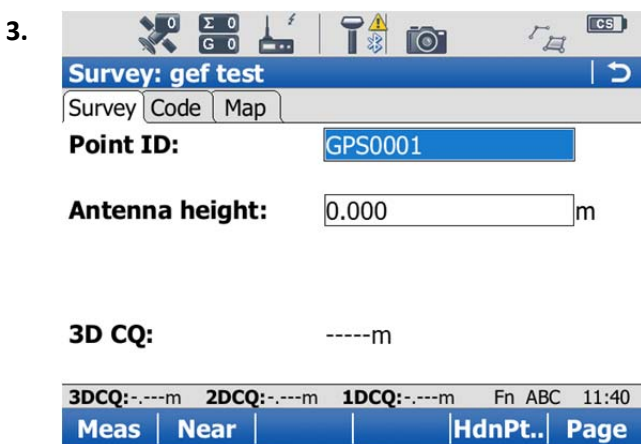
The following document is to be used as a Guide to setting up Auto Point logging on a Leica GS10 RTK Rover. It assumes that you have set up working styles, antenna type and height and radio channels.

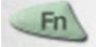


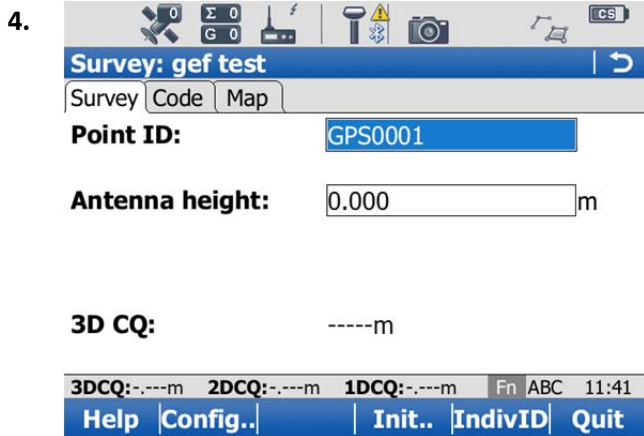
From the main menu in Rover mode enter the *Go to Work* menu. To do this either use the touch screen stylus or the arrow keys on the keypad to move to *Go to Work* and then press **F1(OK)** or OK on the keypad.



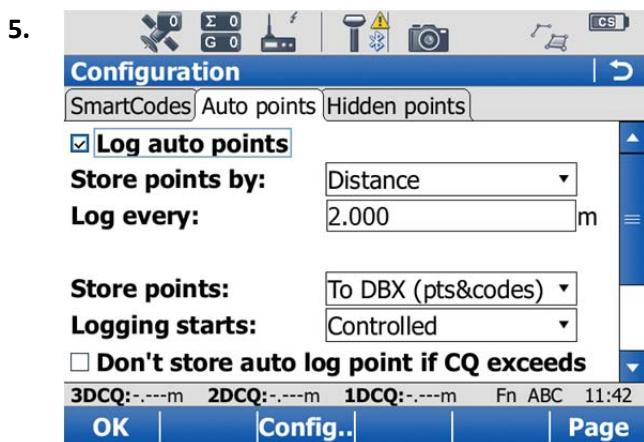
Once in the *Go to Work* menu enter the *Survey* menu by using the same methods as outlined above.



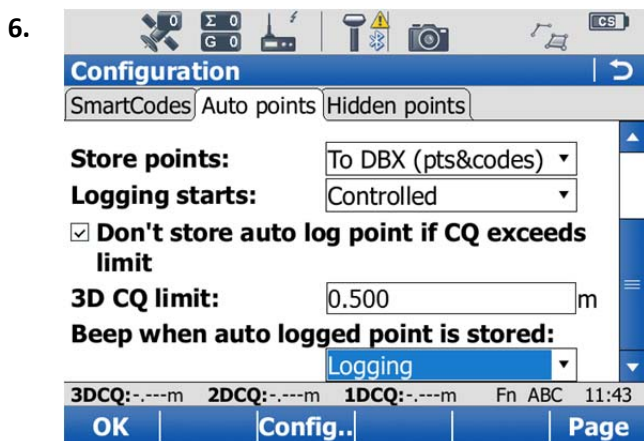
Once in the *Survey* menu press the green function button on the keypad 



By pressing the green function button the **F Keys** along the bottom have changed. **F2** is now **Config..** press this to take us to a configuration menu.

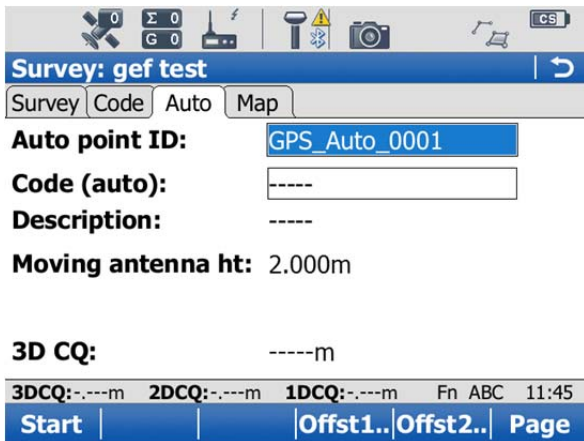


Once in the *Configuration* menu press **F6(Page)** to get to the *Auto Points* tab. To log auto points tick the box *Log auto points*. This brings up menu options to allow you to configure how you want to log your auto points. The first option is how you want to *Store points* by this can be done by Time, Distance, Height Difference, Distance or height, Stop & go or User decides. For the purpose of this guide we'll choose Distance. Next we need to choose to *Log every* here you can put in a distance that you wish to record every point at. *Store points* should be set to *To DBX (pts&codes)* if you want your Auto points to be in the same place as your manual points.



Scroll the screen down by using the slider on the right hand side. The next setting is how you want the logging to start. In the *Logging starts* menu choose *Controlled* if you want to have control of starting and stopping the auto points or *Automatic* if you want them to start as soon as you are in the *Survey*. You can set a CQ limit to not store auto logged points that have a quality worse than *3D CQ limit* that you have set. The option to *Beep when auto logged point is stored* can be set to *Logging* if you want a beep or *Never* if you don't. Once you are happy with these settings press **F1(OK)** to return to the survey screen.

7.



On the survey page you will now see an *Auto* tab, page along to this. If you have chosen to control the start of your auto points then **F1(Start)** will start them logging. This will change to **(Stop)** to allow you to stop and start auto points as you choose. You can now continue with the rest of your RTK survey by returning to the *Survey* tab **F6(Page)**.

NERC Geophysical Equipment Facility

Grant Institute
James Hutton Road
Kings Buildings
Edinburgh EH9 3FE

Tel: 0131 668 2282

Email: gef@nerc.ac.uk

Web: <http://gef.nerc.ac.uk>

Twitter: [@NERCgef](https://twitter.com/NERCgef)



**Geophysical
Equipment Facility**

NATURAL ENVIRONMENT RESEARCH COUNCIL