

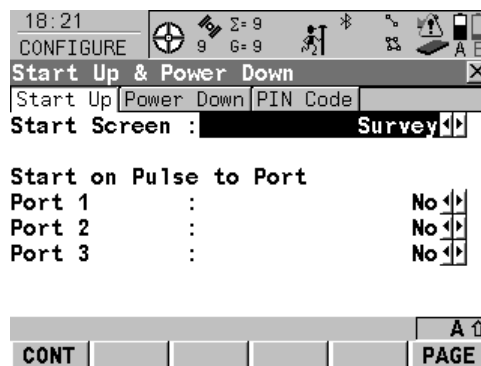
Hardware Configuration

When operating from an external power source such as solar panels, **it is vital that the internal batteries are removed**. The unit should be fed from a regulator that features a “low voltage disconnect” circuit, this will ensure that the power is removed and restored quickly. The GX1230 is programmed to respond to this sudden loss of power and will attempt to restart when power is restored. All of the regulators supplied by the GEF have this feature.

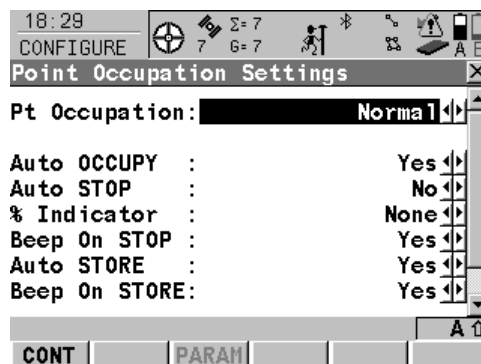
Software Configuration

A number of conditions have to be met to ensure automatic recording. This document assumes that static data is being collected continuously at a single location.

The configuration must specify that the unit is to start up at the Survey screen instead of the Main Menu. Set this option within the configuration set on the Start Up & Power Down screen as shown below.



The setting for Auto OCCUPY should be set to YES in the Point Occupation Settings.

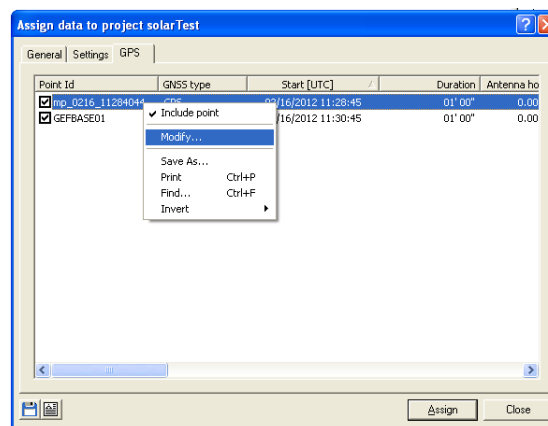


You can now start a new survey as normal, create a job and Point ID and start recording. **There is important information below on the saving of Point ID and antenna height information.**

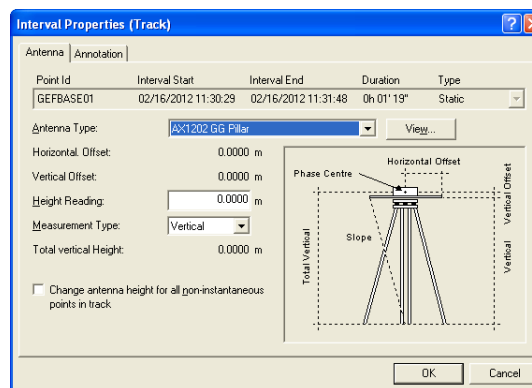
Point ID and Antenna Height Information During Power Failure

Please note the following important information. When you enter the name and height of your point, it is not saved until the end of the data collection (normally when you press STOP). If the power fails during data collection, the point ID is replaced with an automatic name (e.g. mp_0216_11284044). This name is based on the time and date. If you are using ID Templates, the name that you have chosen will appear on the screen when power is restored, however the point will still have been given an automatic ID as the power failed. In addition, **antenna height entered on the survey page will not be saved** when power is lost and will be reset to the Default Height as entered into the configuration set (usually zero). If you wish to have a height other than zero, **you must set it as the Default Height** in the configuration set. It is recommended to take an external note of heights for safety.

When you import data into GeoOffice you have the option to rename the point ID. When the Raw Data Import window is open but before clicking on Assign, go to the GPS tab to look at a list of recorded time intervals. Edit any automatic names by right clicking and selecting Modify.



Antenna height information can be modified in the GPS-Proc section of GeoOffice. Right click on the interval you wish to modify and choose Properties. Enter your values in the Height Reading box.



NERC Geophysical Equipment Facility
Grant Institute
West Mains Road
Edinburgh EH9 3JW

Tel: 0131 668 2282
Email: gef@nerc.ac.uk
Web: <http://gef.nerc.ac.uk>



**Geophysical
Equipment Facility**

NATURAL ENVIRONMENT RESEARCH COUNCIL