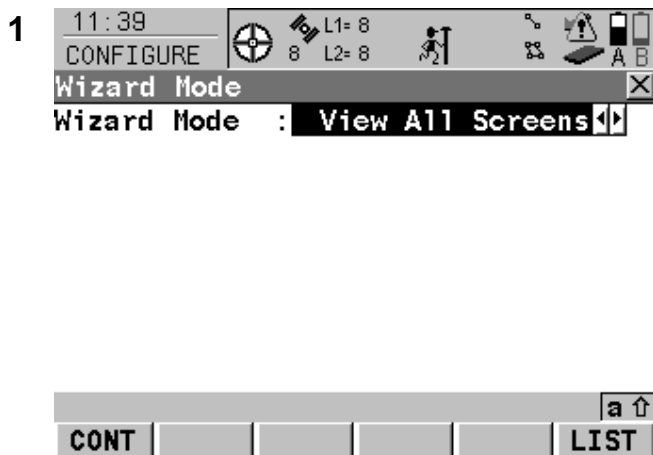
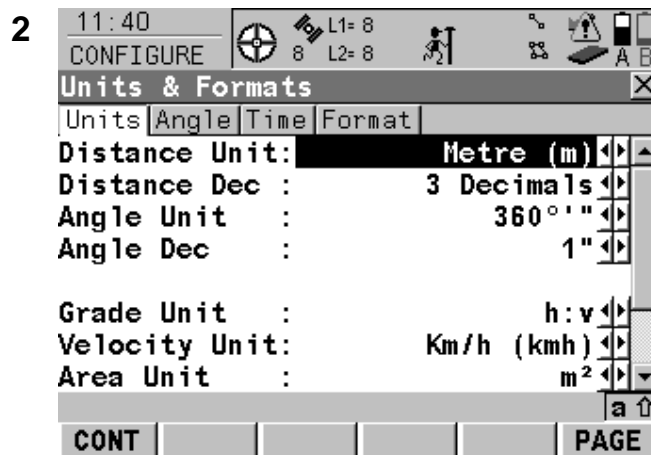


Leica GX1230 Configuration Setting Quick Reference Guide

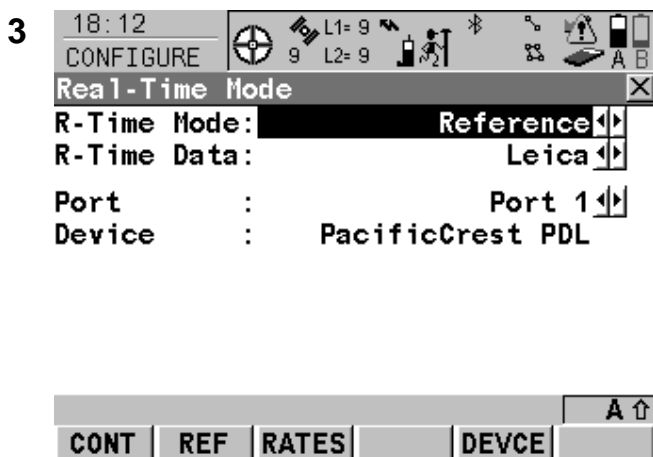
2Hz static base station for ARSF flights with Real-time Transmitter option. Firmware 6.02



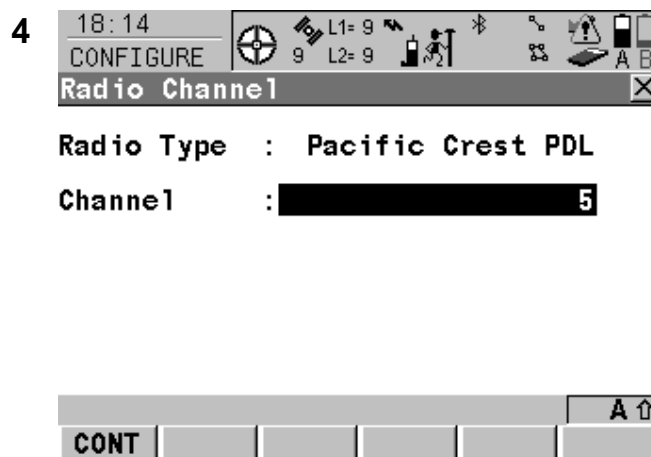
Press F1 (CONT) to move to next screen unless directed otherwise



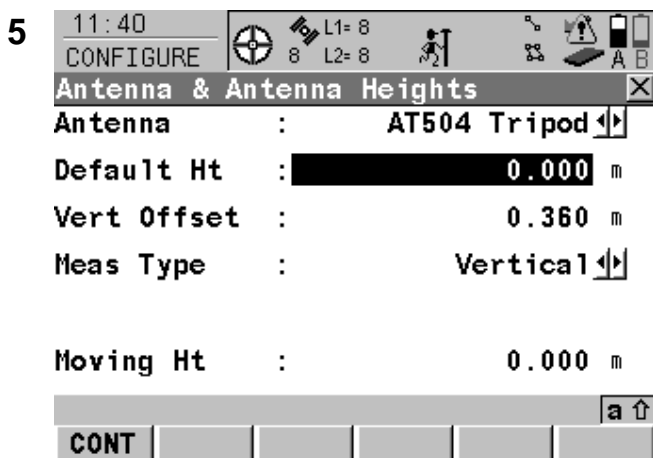
You are free to set your own units as desired



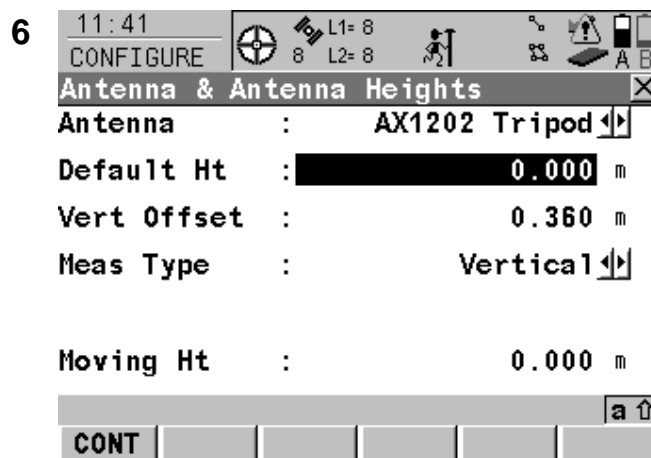
Press F5 (DEVCE) to select the PacificCrest PDL radio. If you select Port 1 here, remember to plug the radio into Port 1 with the cable.



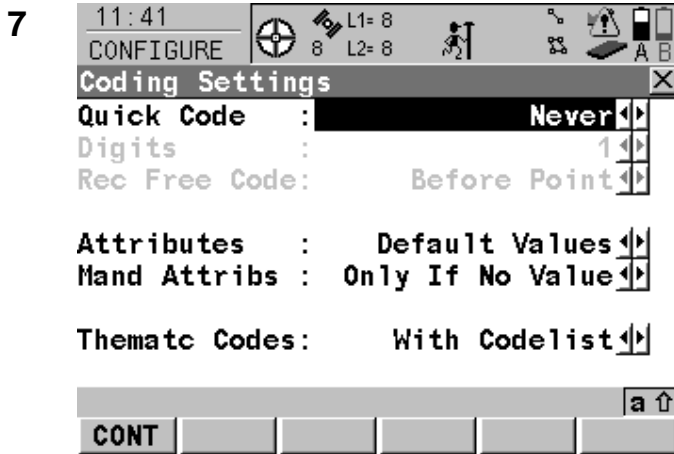
Enter a channel number between 0 and 9, you must find a channel with no interference. The RX light on the transmitter must not be flashing.



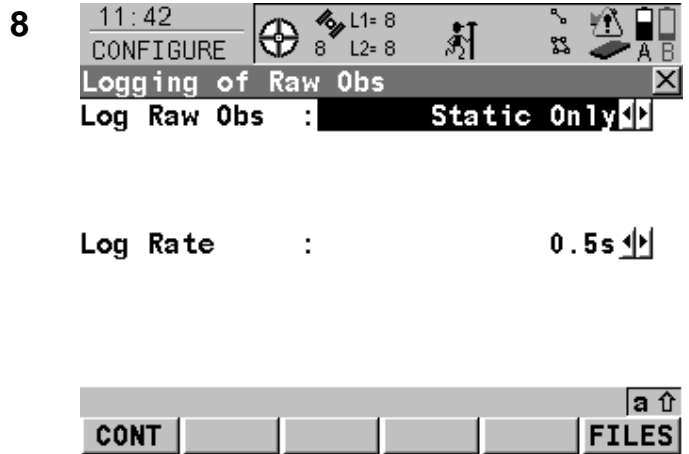
CAUTION: Check which antenna you are using, either the choke-ring antenna (AT504) or the smaller AX1202. Choose Tripod if you are using the Leica tripod and height hook, or Pillar if not using a tripod.



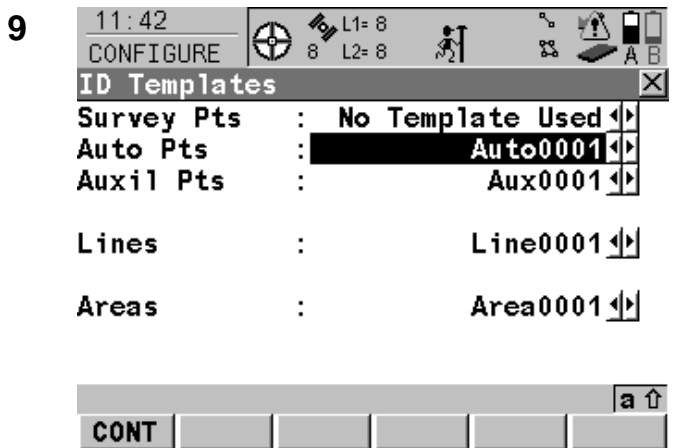
CAUTION: Same screen as Step 5, with AX1202 selected. There are **TWO** models of AX1202, check if you have an AX1202 GG.



You are not using coding so ignore this screen.



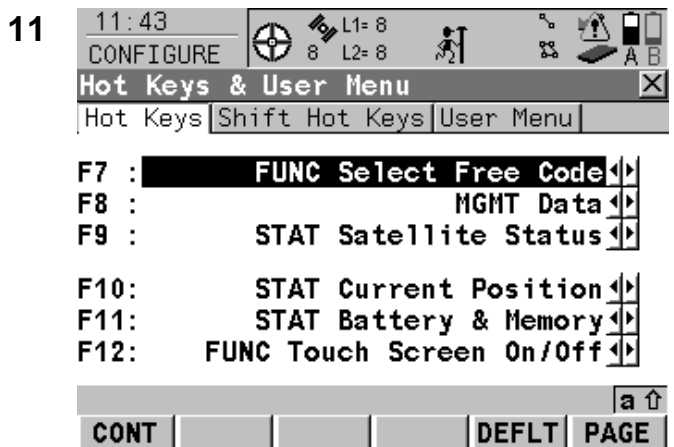
CAUTION: Logging is a vital screen. Use a 0.5 second rate if possible unless directed by the ARSF otherwise. A 1 second rate may be needed to avoid filling the Compact Flash card



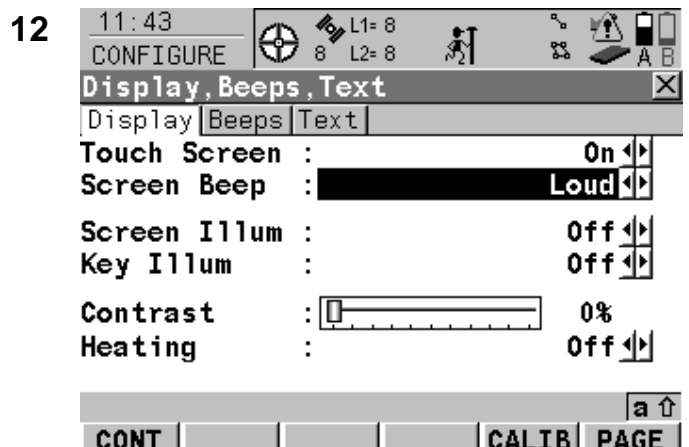
You do not need to define a template as you will be typing in a name for your survey point.



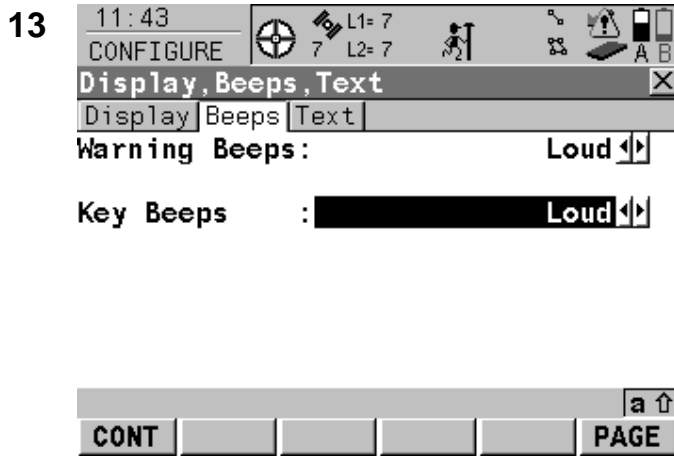
Ignore this page.



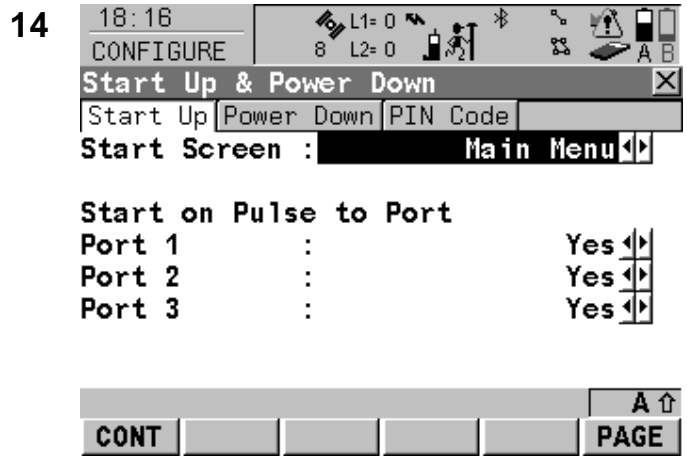
You may set your own shortcut keys as required.



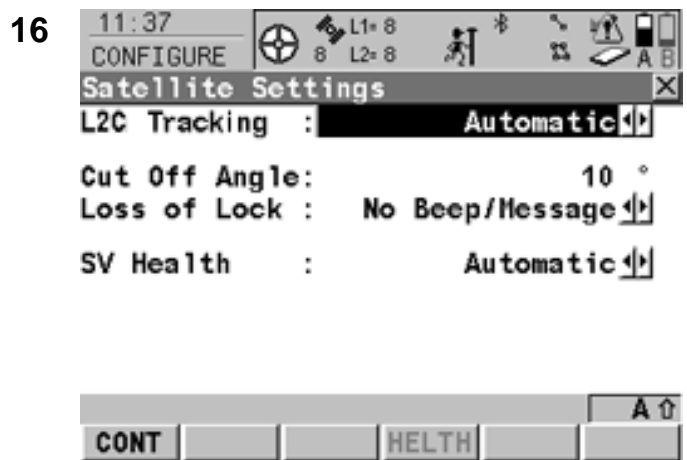
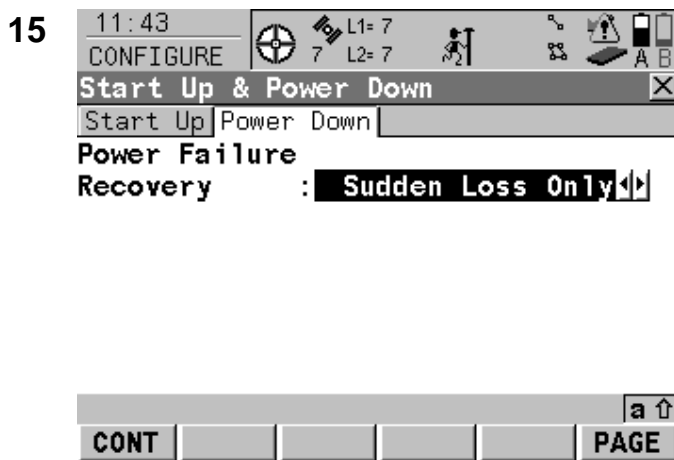
Press F6 (PAGE) to view the Beeps page. The use of beeps and the touchscreen is not mandatory



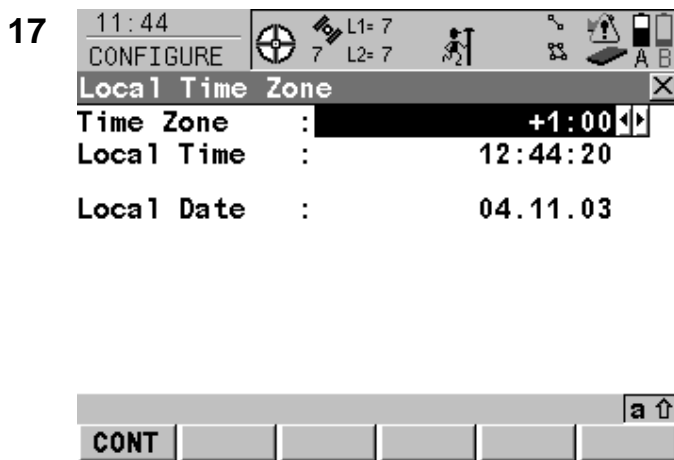
You may choose whether or not to have beeps and their volume



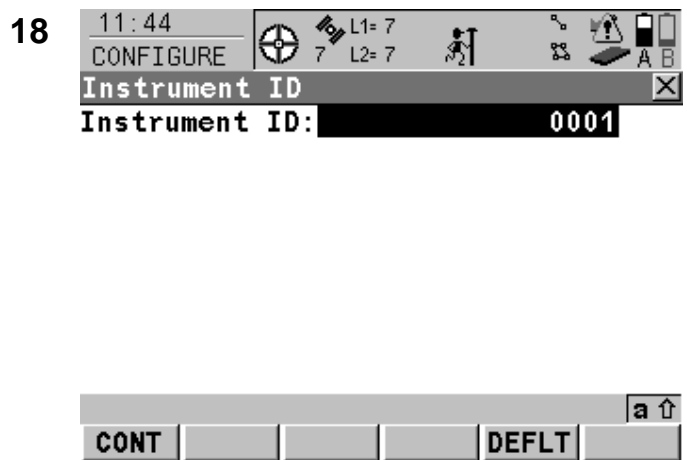
Press F6 (PAGE) to view the Power Down page



Note: On some units that have GLONASS enabled, this screen will have an extra line where GPS and GLONASS can be selected. Choose GPS Only unless directed otherwise by ARSF.



A local time zone may be set for your convenience (e.g BST), it will have no effect on the recorded data and is only used to display time in the top left corner of the screen



Instrument ID should normally be left as the last 4 digits of the serial number of the unit

19

12:44
MANAGE

L1=7
7 L2=7

Configuration Sets

Name	Description
ARSF 2HZ	LOG EVERY 0.5SEC
ARSF15SEC	15 Second Static
PP Static(5 sec)	Default
RTK Reference	Default
RTK Rover	Default

a ↑

CONT NEW EDIT DEL MORE

You are now back viewing the list of configuration sets, press F1 (CONT) to return.



**Geophysical
Equipment Facility**

NATURAL ENVIRONMENT RESEARCH COUNCIL

NERC Geophysical Equipment Facility
Grant Institute
West Mains Road
Edinburgh
EH9 3JW

Tel: 0131 668 2282
Fax: 0131 650 5901

Email: gef@nerc.ac.uk
Web: <http://gef.nerc.ac.uk>